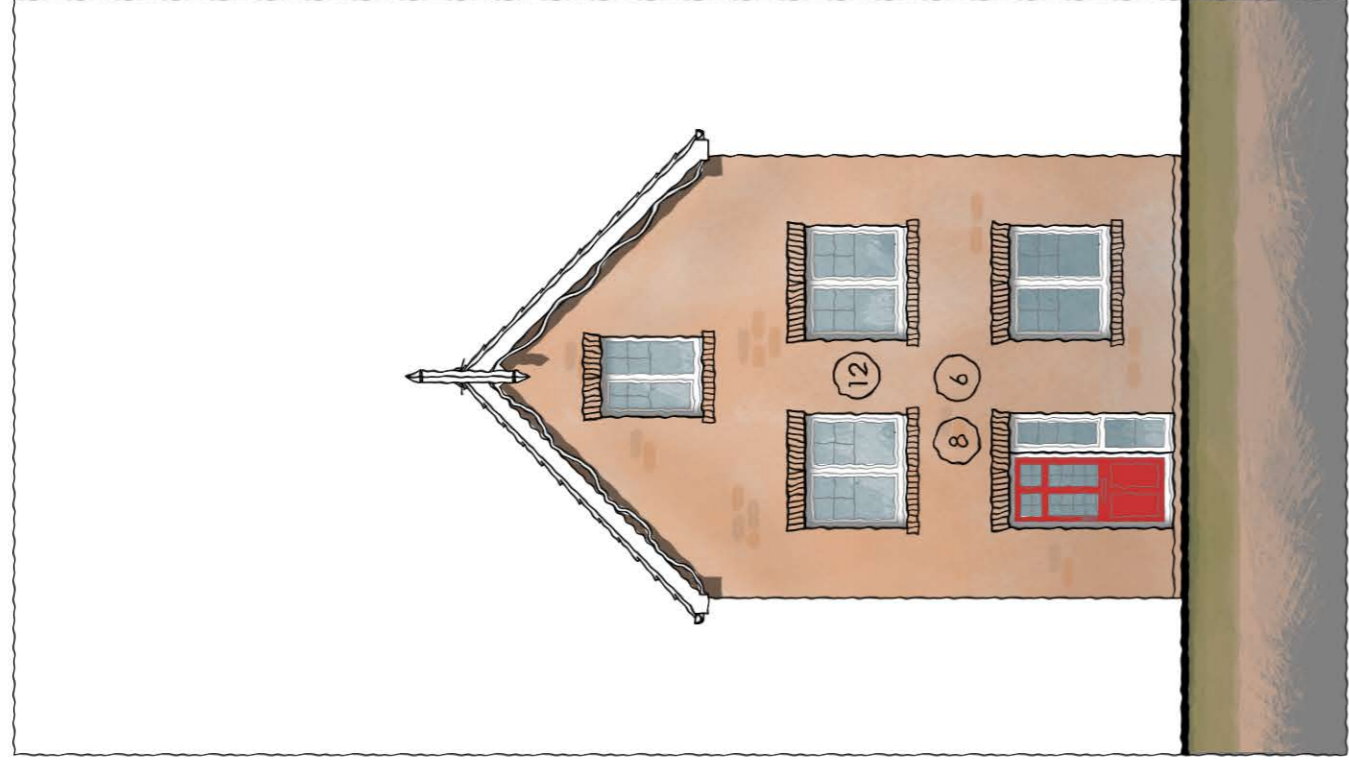


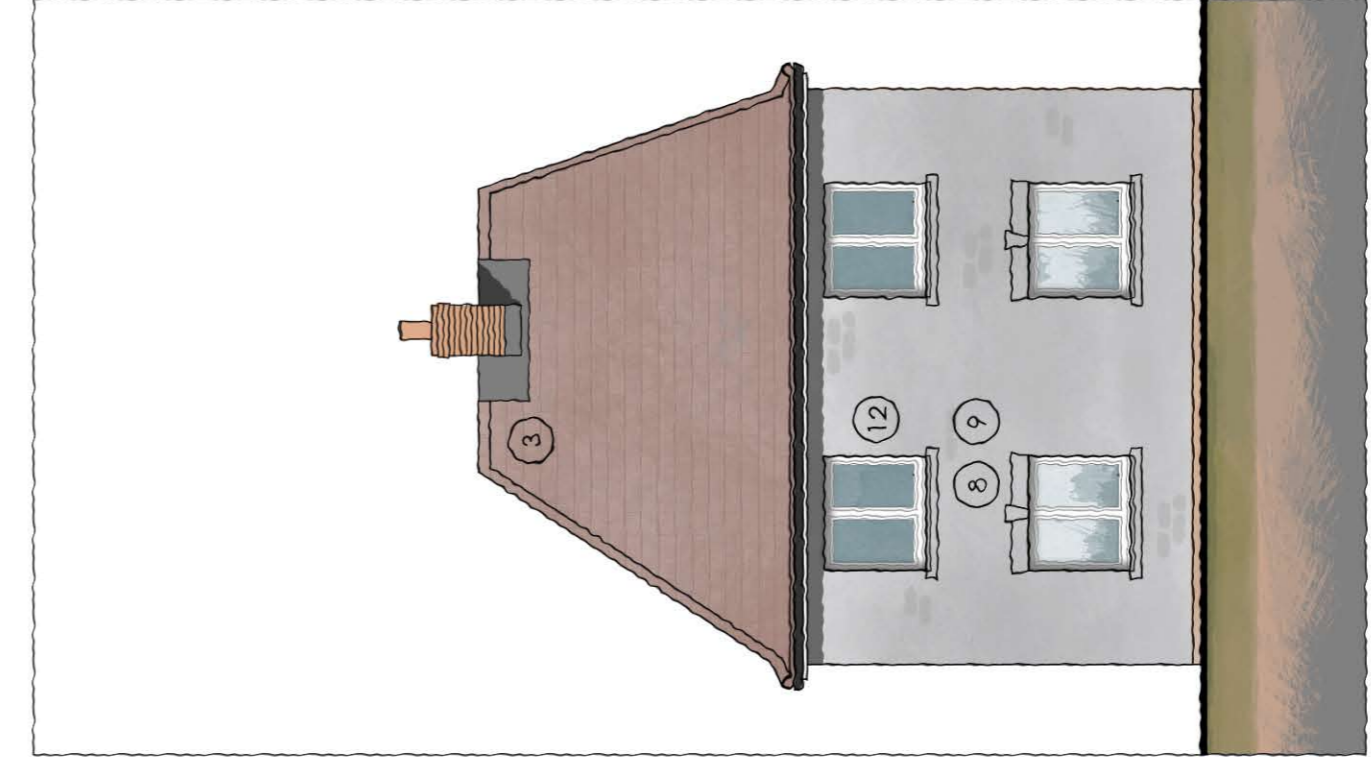
REVISIONS

Rev.	By	Date
A	KLS	Aug'23
B	KLS	Nov'23

General minor amendments.
 General minor amendments.
 Brick ribbon added to gable.
 General minor amendments.
 Cable above Guest Suite lowered.
 Main entrance and buggy store relocated.



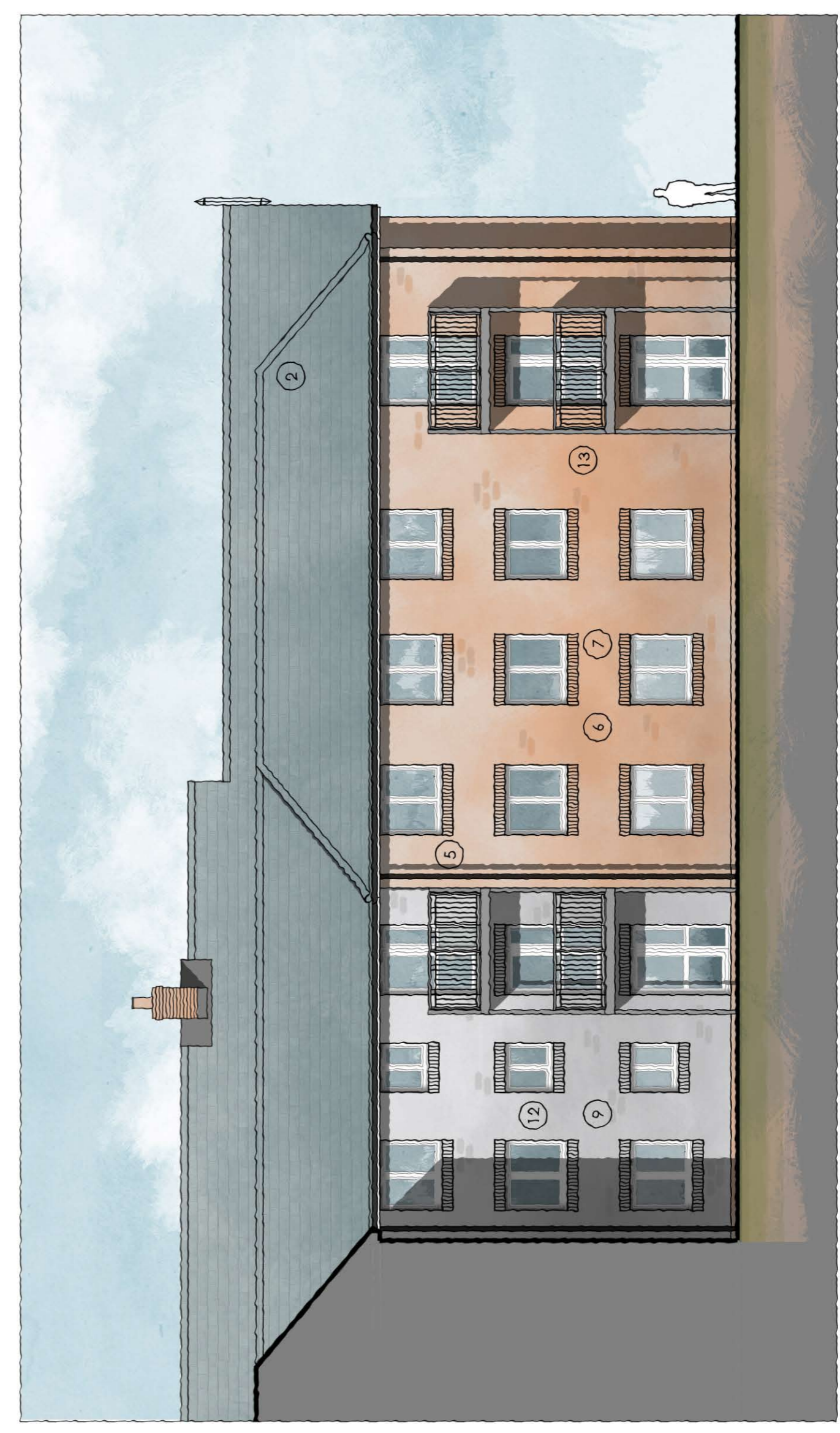
Elevation G
South-East Gable



Elevation H
North Gable

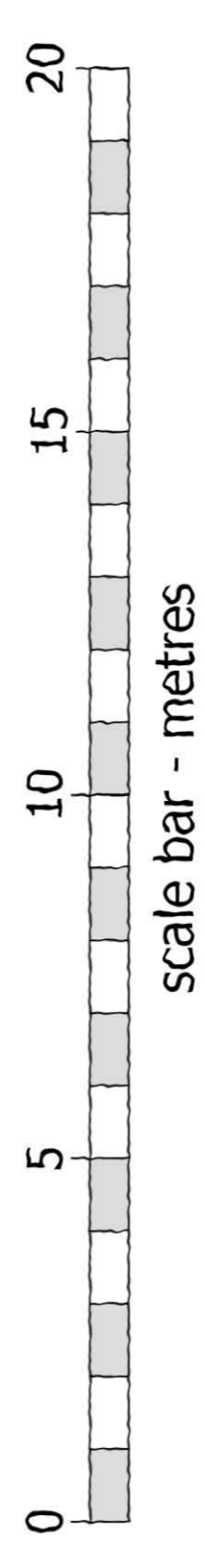


Internal Courtyard Elevation E



Internal Courtyard Elevation F

Key to Elevations



- 1 Prefabricated chimney
- 2 Natural slate roof tiles
- 3 Red clay roof tiles
- 4 Dormer windows
- 5 Black UPVC gutters and fascia
- 6 Red facing brick
- 7 Matching brick window, heads & cills
- 8 Painted heads & cills
- 9 White-painted brickwork, heads & cills
- 10 Projecting GRP canopies over flat doors
- 11 Tax window
- 12 White UPVC casement windows
- 13 Painted metal balustrades
- 14 Feature cast stone entrance portico
- 15 Red clay tile hanging
- 16 Feature brick ribbon

planning issues
 TOWN PLANNING AND ARCHITECTURAL DESIGN
 Rob Jackson RIBA
 Churchill House, 7 Foresterie
 Ringwood, Hampshire RG30 3AG
 Telephone: 01256 344000
 Fax: 01256 344001
 E-mail: design@planningissues.co.uk

Churchill Retirement Living
 Client

Project Title
 Retirement Living Apartments
 Edwina Mountbatten House
 Ramsey
 SC21 8GH

Drawing Title
 PROPOSED OTHER ELEVATIONS
 PLANNING APPLICATION

Scale: 1:100 @ A1
 Drawn: KLS
 Date: JUNE 2023
 Checked: RJ
 Rev: B
 Drawing No. 10123RS - PATO